



ESP

Play with purpose

Play Area Aftersales Care

Continued Management & Inspection Guide



Chas Premium
Plus Accredited



Constructionline
Gold Member



The Play
Inspection Co.



Contents

Page

1	Introduction	3
2	Safe Use & Supervision	4
3	Clothing & Footwear	4
4	Safety Surfaces	4
5	Routine Inspection Types	4
6	General Maintenance Guidelines	5
~	Operational Inspection	7
~	Visual Inspection	4
7	Product-Specific Aftercare	8
~	Sail Shades	8
~	Artificial Grass	8
~	Rubber Mulch	8
~	Handgrips	8
~	Timber	8
~	MUGAs	8
8	Guarantee Schedule	10





1 Introduction

Thank you for choosing ESP. This Maintenance and Aftercare Pack is designed to guide you through the safe use, regular inspection, and long-term care of your playground equipment.

It is essential that you understand and implement the maintenance procedures to ensure the safety of users and to uphold your product warranty.

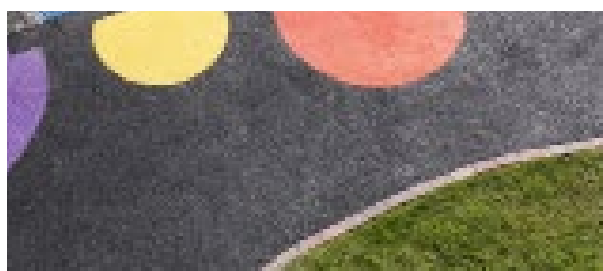
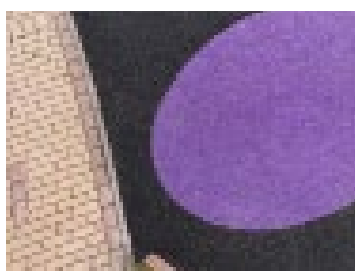
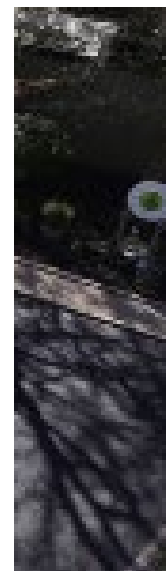
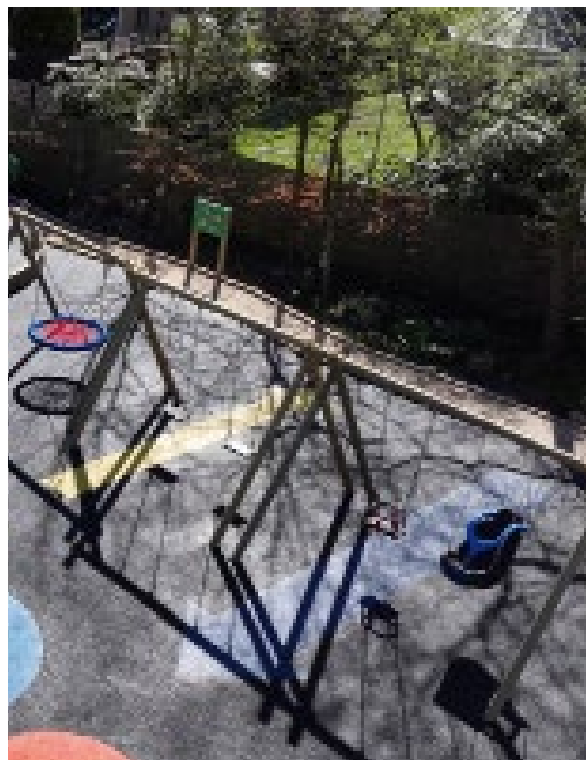
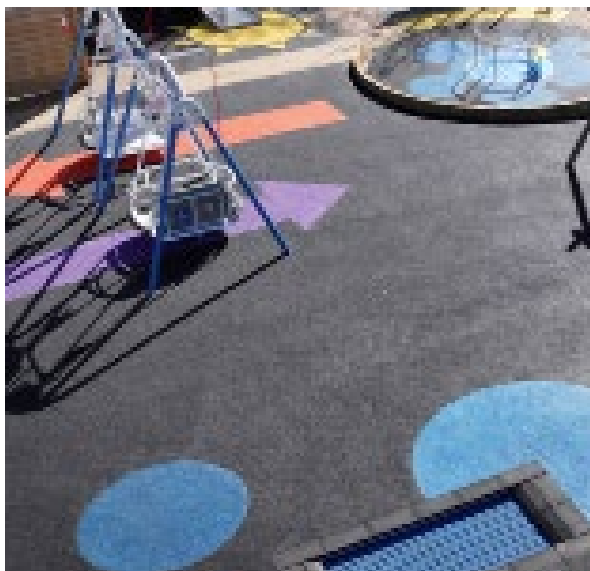
All ESP products are accompanied by downloadable product information sheets, available on our website. These outline the recommended age ranges, usage guidelines, and maximum occupancy per piece of equipment.

We urge all customers to familiarise themselves with these documents.

Ongoing maintenance and routine inspection should be carried out in accordance with the guidelines set out by:

- **British Standards (BS EN 1176 & 1177)**
- **The Health and Safety Executive (HSE)**
- **ROSPA**
- **Your Insurer or relevant advisory bodies**

Any defects or safety concerns must be reported to ESP immediately, and affected equipment should be taken out of use until resolved.



2 Safe Use & Supervision

Children must be supervised at all times when using playground equipment. Conduct risk assessments to determine the appropriate number of staff required, considering:

- Age groups and capabilities
- Visibility and line of sight
- Peak usage times

Staff should be familiar with all equipment and enforce rules that promote safe use.

3 Clothing & Footwear

Ensure children wear suitable clothing to prevent injury. Avoid:

- Scarves, ties, or loose clothing
- Woollen gloves or hoods that can snag
- Open-toed sandals, heels, or shoes with untied laces

4 Safety Surfaces

All play equipment with a fall height of 600mm or more must be installed over an impact-absorbing surface.

Key Points:

- Surfaces must comply with BS EN 1177.
- Critical Fall Height (CFH) must be considered when selecting surfacing
- Natural grass may suffice for CFHs up to 1.5m (if soil has adequate absorption)
- Loose-fill materials like bark must maintain a minimum depth of 300mm

Routine inspections should verify surfacing depth and integrity.

5 Routine Inspection Types

Routine Visual Inspection (Daily/Weekly)

A quick check for:

- Damage, wear or vandalism
- Exposed foundations
- Loose fixings, sharp edges
- Signs of rot or corrosion
- Cleanliness & debris

Tip: Perform this inspection every Monday morning, especially following weekends or public access.

Operational Inspection (Monthly)

More detailed check focusing on:

- Structural stability
- Functionality of moving parts
- Surfacing integrity
- All fixings and joints

Annual Inspection

Must be conducted by an RPII-certified inspector. Contact ESP to schedule this.





6 General Maintenance Guidelines

Fixings

- Check all bolts and screws regularly
- Tighten or replace as needed. Contact ESP if unsure of the correct parts

Timber

- Inspect for rot, splitting, or infestation.
- Cracks under 10mm are natural; anything wider must be reported
- Annual treatment for plywood is recommended
- Repaint promptly to prevent corrosion

Decking

- Check for loose screws or damaged boards. Replace or report as required

Moving Parts

- Lubricate regularly
- Replace worn components promptly to avoid further deterioration

Ropework

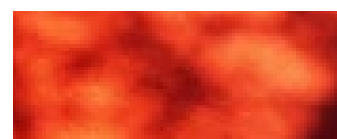
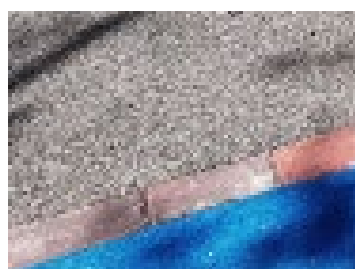
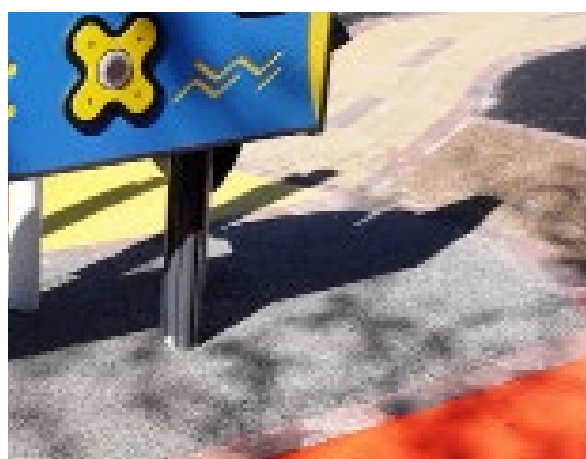
- Check for fraying or exposed steel
Remove and report any damaged areas

Surfaces

- Ensure loose-fill areas are maintained at proper depth
- Remove any foreign objects, monitor for subsidence

Foundations

- Check for movement, protrusions, or instability
- Take out of use if compromised



Operational Inspection

- 1) **Are any of the fixings (nuts, bolts, screws) loose?** yes ☐ no ☐
If "yes" then read our action points for "Fixings" in the Maintenance Guide.
- 2) **Are any of the fixings missing?** yes ☐ no ☐
If "yes" then read our action points for "Fixings" in the Maintenance Guide.
- 3) **Are any of the parts worn?** yes ☐ no ☐
If "yes" then read our action points for "Moving Parts" in the Maintenance Guide.
- 4) **Does the moving part fixing point require lubrication?** yes ☐ no ☐
If "yes" then read our action points for "Moving Parts" in the Maintenance Guide.
- 5) **Are the foundations of the equipment secure and firm?** yes ☐ no ☐
If "no" then read our action points for "Foundations" in the Maintenance Guide.
- 6) **Are the foundations of the equipment protruding from the surrounding surface?** yes ☐ no ☐
If "yes" then read our action points for "Foundations" in the Maintenance Guide.
- 7) **Are any parts of the equipment loose that were once secure?** yes ☐ no ☐
If "yes" then read our action points for "Fixings" and "Decking Areas" in the Maintenance Guide.
- 8) **Have any parts of the equipment started to rot or rust?** yes ☐ no ☐
If "yes" then read our action points for "Timbers" and "Steel" in the Maintenance Guide.
- 9) **Have any parts of the equipment been damaged by vandalism?** yes ☐ no ☐
If "yes" then read all of our action points in the Maintenance Guide.
- 10) **Have previously hidden sections of timber now become exposed?** yes ☐ no ☐
If "yes" then read our action points for "Timber" in the Maintenance Guide.

Inspection carried out by:

Name:

Position:

Date:

Need another hard copy? Download from our website at www.espplay.co.uk/maintenance



Routine Visual Inspection

- 1) Does the equipment appear structurally good and is it firm in its foundations? yes ☐ no ☐
If "no" then read our action points for "Foundations" in the Maintenance Guide.
- 2) Is there any evidence of damage caused by vandalism? yes ☐ no ☐
If "yes" then read all of our action points in the Maintenance Guide.
- 3) Are there any sharp protrusions in the equipment or the safety surface? yes ☐ no ☐
If "yes" then read all of our action points in the Maintenance Guide.
- 4) Are there any foreign objects, such as broken glass, needles etc... present? yes ☐ no ☐
If "yes" then read our action points for "Cleanliness" in the Maintenance Guide.
- 5) If loose fill safety surfacing is being used, does it require topping up? yes ☐ no ☐
If "yes" then read our action points for "Surfaces" in the Maintenance Guide.
- 6) Does the safety surface look in good condition? yes ☐ no ☐
If "no" then read our action points for "Surfaces" in the Maintenance Guide.
Alternatively, please contact us.
- 7) Are any of the fixings (nuts, bolts, screws) loose? yes ☐ no ☐
If "yes" then read our action points for "Fixings" in the Maintenance Guide.

Notes:

.....

.....

.....

.....

Inspection carried out by:

Name:

Position:

Date:

Need another hard copy? Download from our website at www.espplay.co.uk/maintenance

7 Product-Specific Aftercare

Sail Shades

- **Must be removed during:**
Strong winds
Heavy snow
Storms or coastal weather
- **Not removing during adverse weather voids the guarantee**
- **Clean with mild detergent and water only**

Artificial Grass

- **Sweep regularly to remove debris**
- **Apply pet-safe weed killer as needed**
- **Clean with eco-friendly detergent if soiled**

Rubber Mulch

- **Sweep or blow leaves and debris**
- **Weed control membrane helps, but occasional treatment is advised**

Handgrips

- **Tighten during initial weeks post-installation**
- **Specialist Allen key provided**

Timber

- **Cracks less than 10mm are safe**
- **Contact ESP if wider cracks persist**

MUGAs (Multi-Use Games Areas)

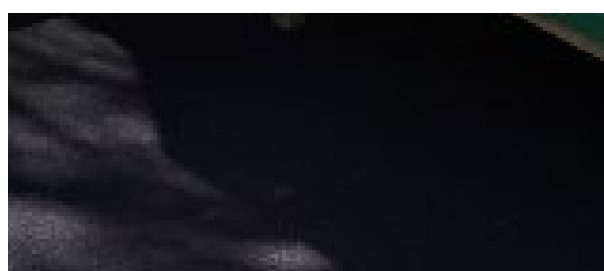
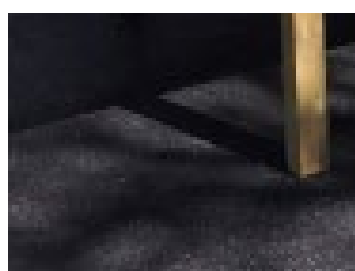
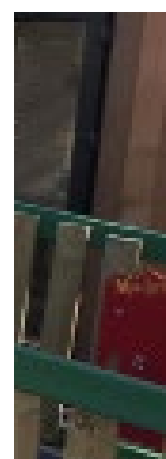
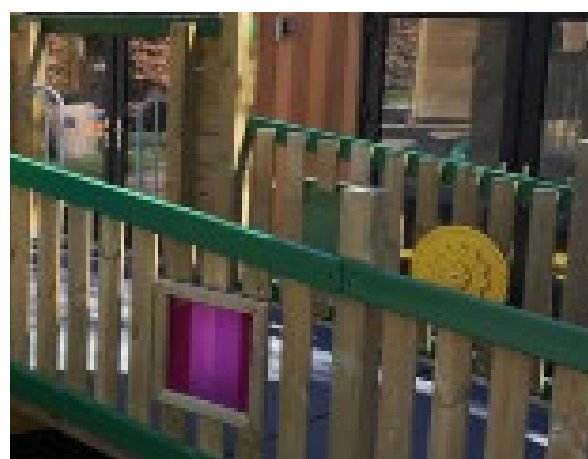
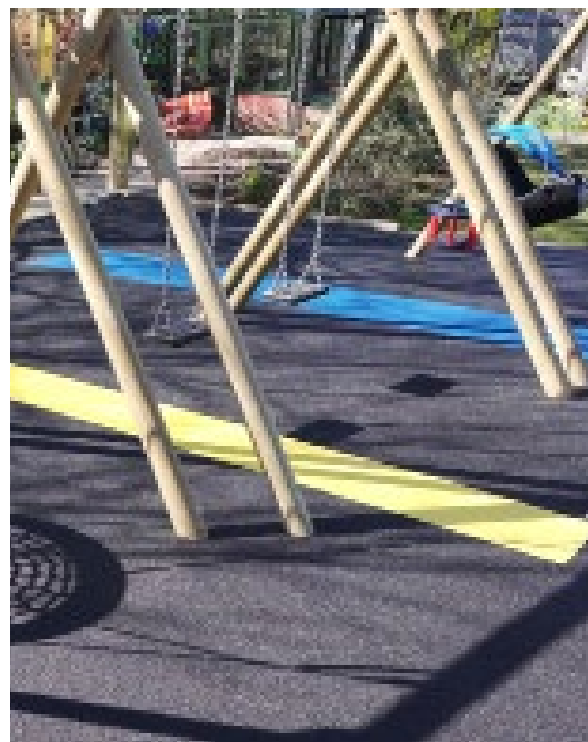
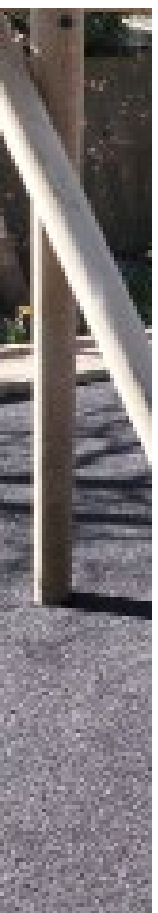
Maintenance Schedule:

- **Daily:** Visual check, litter removal
- **Weekly:** Drag brushing, seam checks
- **Monthly:** Power sweeping
- **Annually:** Full condition report
- **As Needed:** Weed treatment, infill adjustment, line marking

Important Notes:

- **Never allow metal studded boots**
- **Avoid smoking and glass bottles**
- **Ensure proper signage is installed**

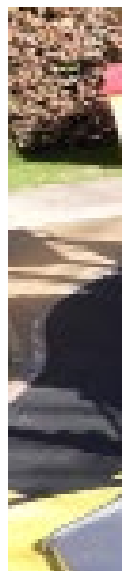




8 Guarantee Schedule

Product / Material	Guarantee Period
Timber	
~ Radiata Pine, Laminated Redwood	15 Years
~ Sawn Redwood	15 Years
~ Plywood	12 Months
Surfacing	
~ Artificial Grass	5 Years
~ Wetpour	5 Years
~ Rubber Mulch (Structure)	5 Years
~ Rubber Mulch (UV Colour)	12 Months
~ Grass Matting	2 Years
~ Resin Bonded Gravel	5 Years (UV Guarantee)
Steel & Metalwork	
~ Structural Steel	20 Years
~ Galvanising	20 Years
~ Powder Coating	5 Years
Plastic	
~ HDPE Panels, Polydek Panels	5 Years
Slides, Swings & Ropework	
~ Plastic Slides & Tunnels	5 Years
~ Swing Seats	2 Years
~ Reinforced Rope	2 Years
~ Chain / Polypropylene Rope	1 Year
Fixings & Brackets	1 Year
Polycarbonate (Wall Boards, Tables)	1 Year
Roofing Sheets (Polycarbonate)	10 Years
Handgrips	1 Year
Sail Shades (UV Stable)	1 Year
Thermoplastic Playground Markings	3 Years

Note: Warranties are only valid if inspections and maintenance are documented and performed in line with this guide and ESP's terms of sale.



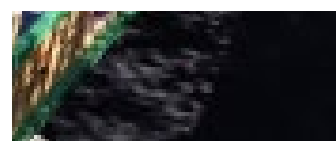
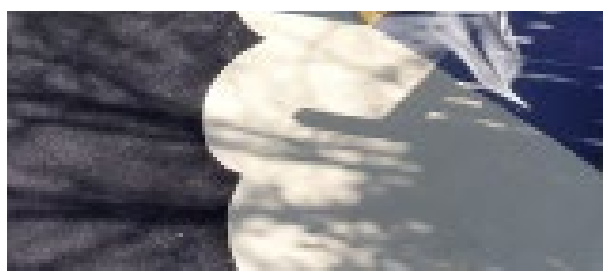
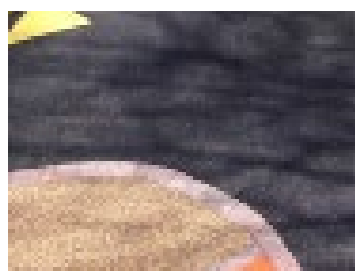
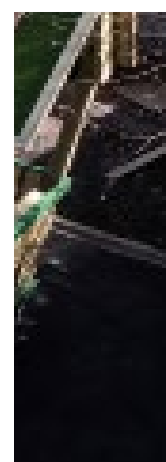
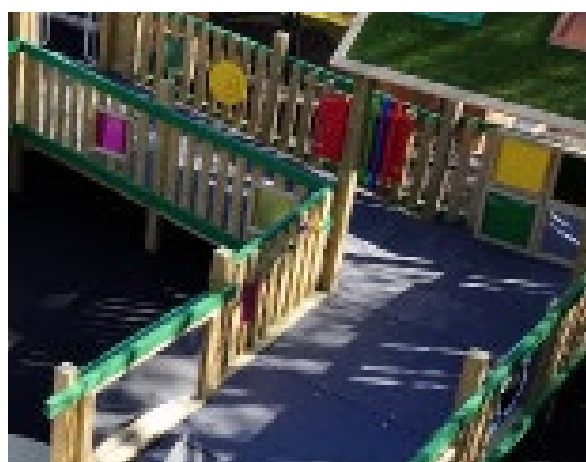
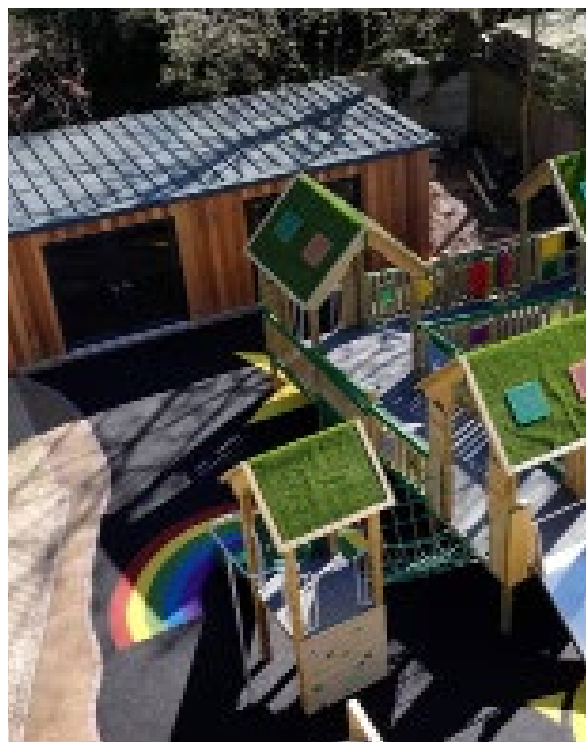


9 Final Note

Proper care and routine inspections are essential not only for user safety but also to ensure your investment in play equipment is protected and long-lasting.

If you have any questions or require further assistance, please contact the ESP customer care team on:

01282 43 44 45





ESP

Play with purpose

Play Area Aftersales Care

Continued Management & Inspection Guide



Chas Premium
Plus Accredited



Constructionline
Gold Member



The Play
Inspection Co.

Smas
WORKSAFE